



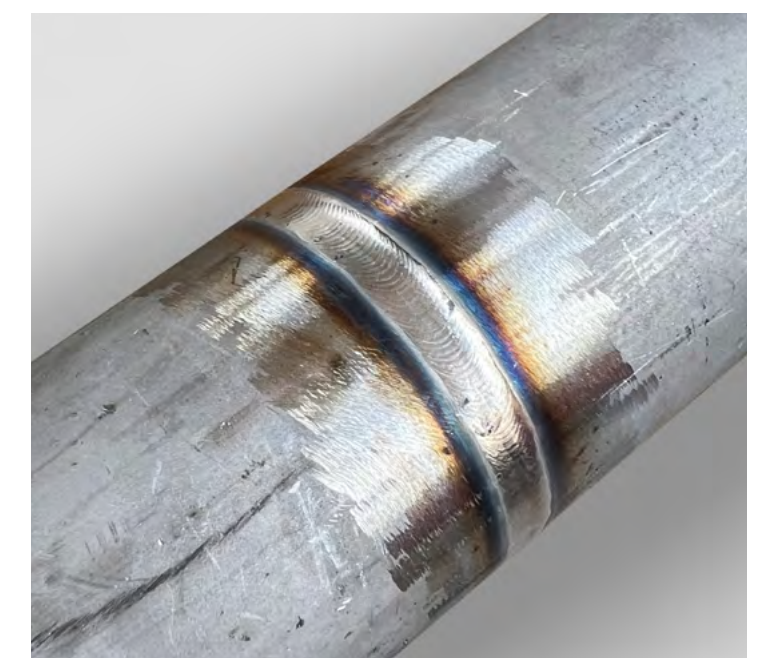
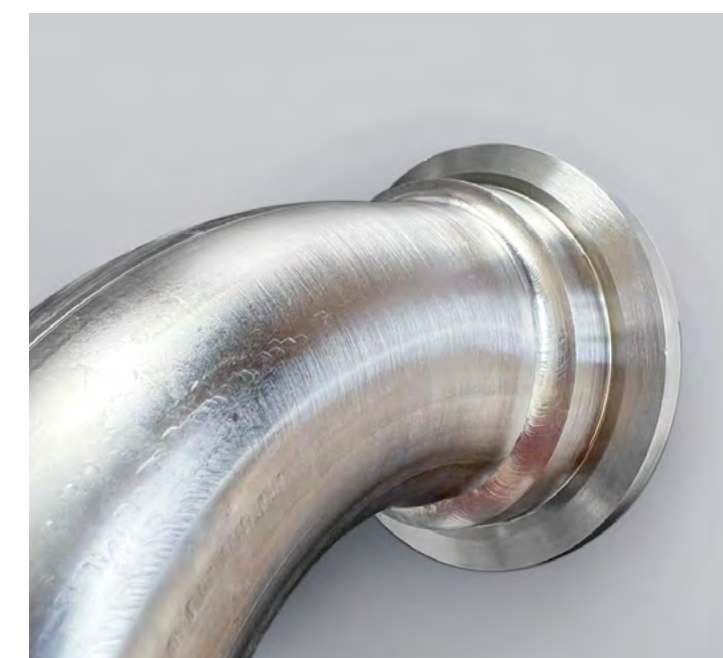
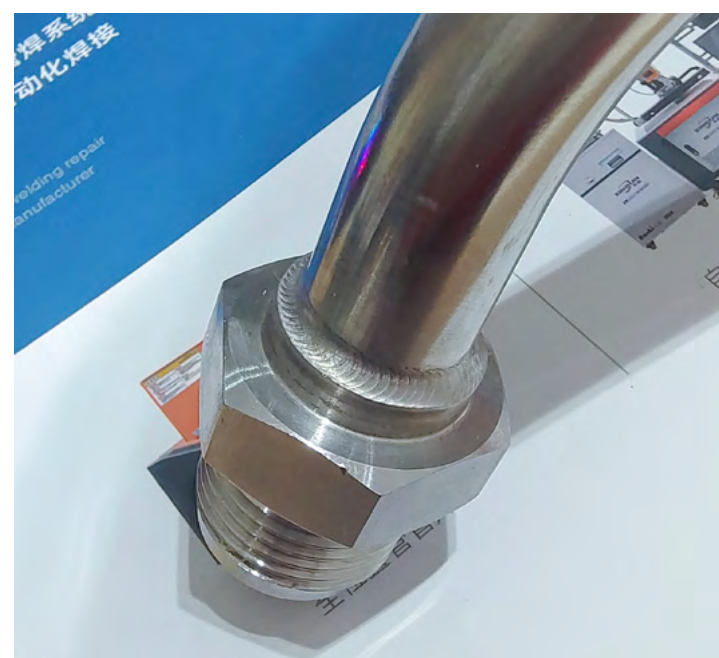
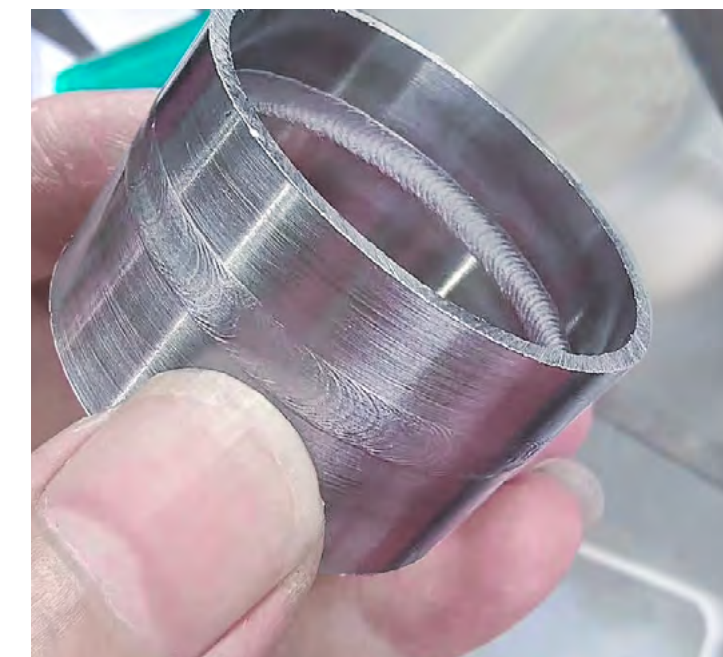
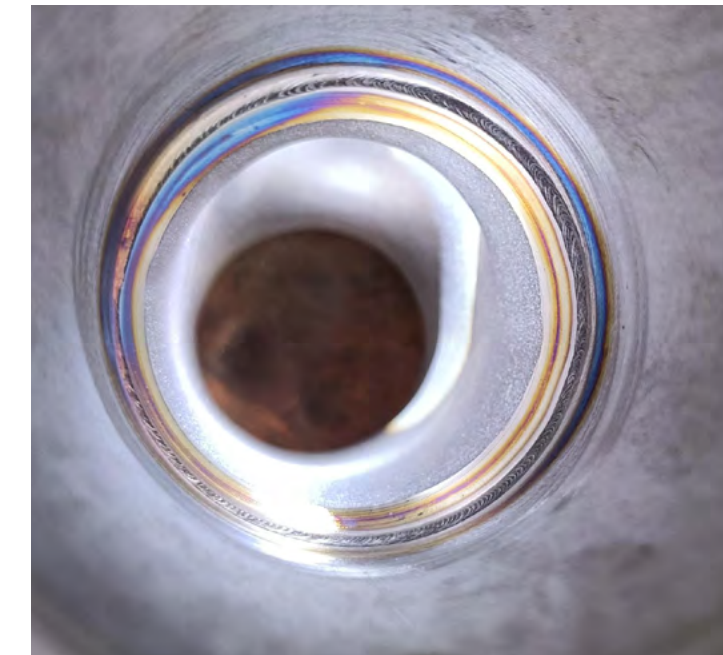
Closed tube welding gun

Designed and developed special weld head for all position automatic welding of various pipe fittings.

- ✔ High duty cycle
- ✔ Quick replacement without obstacles
- ✔ Lightweight and durable
- ✔ Convenient and efficient operation

| Model | XD-40 | XD-80 | XD-120 | XD-170 |
|------------------------------|--|----------------|--------------|---------------|
| Main power supply | XD-20Pro / XD-20W | | | |
| Welding material | Carbon steel/stainless steel/titanium alloy, etc | | | |
| Welding Diameter Range/mm | 6.35-38.1 | 10-76.2 | 19-114.3 | 38.1-168 |
| The Maxium Wall Thickness/mm | 0.5-2.5 | 0.5-3 | 0.5-3.0 | 0.5-3.0 |
| Torch rotation speed(rpm) | 0.16~2.8 | 0.1~1.8 | 0.1~1.8 | 0.1~1.8 |
| Welding Heads Cooling | Water cooling | | | |
| Protective gas | Argon | | | |
| Weight(kg) | 3.5 | 5 | 6.5 | 9.5 |
| Dimension(mm) | 381.5*120*48 | 438.5*172.5*52 | 513*226.5*48 | 650*331.5*163 |

Enclosed welding torch case diagram





Company introduction

Research-manufacturing-sale-after sale integrated enterprise

Shanghai Chuanli Industrial Co., Ltd. is a high-tech enterprise with technological innovation as its core competitiveness, and is a mature integrated enterprise integrating research and development, manufacturing, sales and service.

Brand strength

The company is headquartered in the international metropolis of Shanghai, covering an area of approximately 8 000 square meters, It has offices in Tianjin, Guangzhou, Chongqing, Anhui, and Jiangsu. In recent years, the company has been actively expanding its online, offline and overseas markets, establishing brand value. The machines are widely sold to developed countries such as the United States, Japan, Singapore, etc, have gained more recognition from enterprises in the international market.

The company's core R & D team has rich R & D experience in the field of automation, has always been oriented to meet customer needs, seeking R & D oriented methods, and is committed to providing customers with suitable and reliable products. The company has independent research and development rights of products including track welding machine/tube plate welding machine/automatic welding platform/handheld laser welding machine/automatic shaft repair equipment, etc., to realize the concept of intelligent products and automation.

10000

Physical factory



300

Enterprise staffs



50⁺

Utility patent



50⁺

Research staff



Qualification certificate

We insist on 'speaking with authority and quality'



National high-tech enterprises | ISO9001-ISO45001-ISO14001 | Eu CE certification

Utility model patent certificate

As of July 2024, the company has obtained dozens of utility model patents



Software authoring certificate



Software product certificate





After-sale service

Details determine quality, and quality comes from professional technology

- Different configuration warranty period is different, the details to consult the sales personnel.
- During the warranty period, Xindun is responsible for free replacement of parts and services for any damage or damage caused by the quality of the equipment, except for conventional consumables (protective lenses, copper mouths, etc.) and those responsible for illegal operation.
- KEPUNI provides lifetime maintenance services for the products provided, and provides daily consultation and guidance related to the equipment at any time. After the warranty period, it still provides users with extensive and preferential technical support and spare parts supply.
- 24-hour customer service online, ready to help you solve problems
- KEPUNI promises to timely inform users of software upgrades and provide free software upgrade services.
- KEPUNI has sufficient spare parts and accessories, which can timely provide technical services and spare parts services to users to meet the needs of equipment maintenance.



Tel
+86 16621108513



Email
info@kepuniwelder.com



Web
www.kepuniwelder.com



Address
No.688 Jiaqian Rd, Jiading District, Shanghai